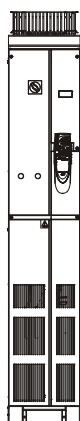


Unidrive SP size 6 and 7 Free Standing drive with switch disconnecter Installation Sheet

Ratings at 40°C (104°F) or 33°C (91°F) for E23 variants

Model		Normal Duty				Heavy Duty				
		Maximum continuous output current	Nominal power at 400V	Motor power at 460V	Peak current	Maximum continuous output current	Open loop peak current	Closed loop peak current	Nominal power at 400V	Motor power at 460V
		A	kW	hp	A	A	A	kW	hp	
	64X1	205	110	150	226	180	232	270	90	150
	64X2	236	132	200	260	210	271	315	110	150
	74X1	290	160	250	319	238	307	357	132	200
	74X2	350*	200	280	369	290	374	435	160	250
	66X1	125	110	125	138	100	129	150	90	100
	66X2	144	132	150	158	125	161	188	110	125
	76X1	168	160	150	185	144	186	216	132	150
	76X2	192	185	200	211	168	217	252	160	150

* at 35°C (95°F) for standard drive, 30°C (86°F) for E23 drives

Figure 1-1 Unidrive SP size 6 and 7 Free Standing drive with switch disconnecter

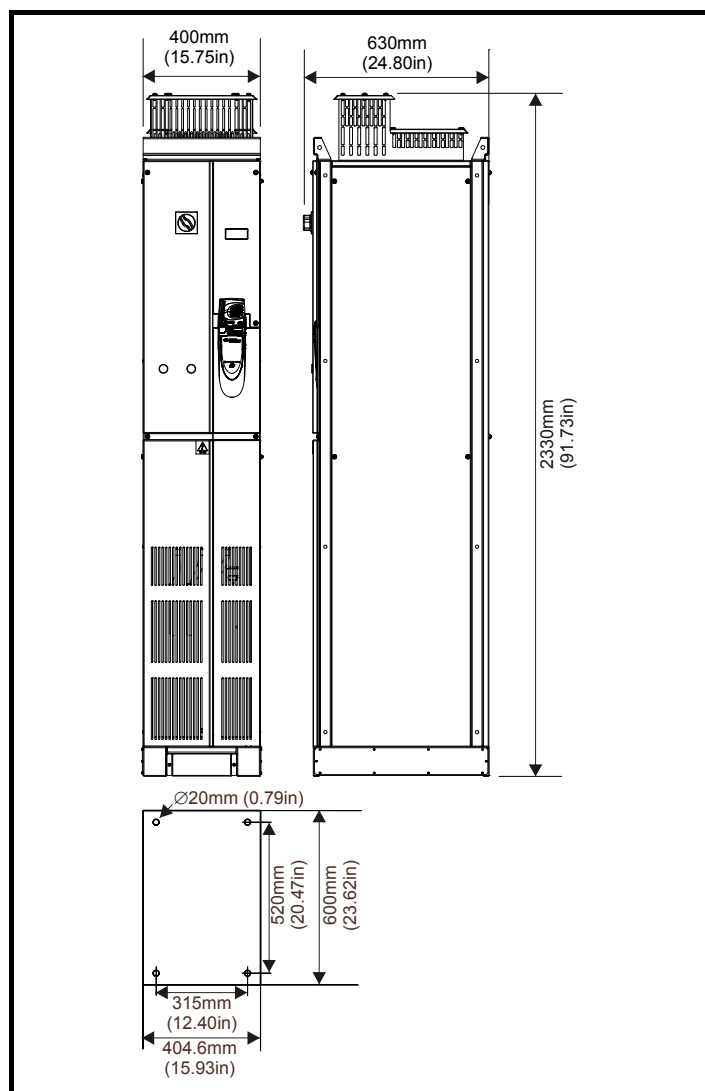


Figure 1-2 Removing the Unidrive SP size 6 and 7 Free Standing drive with switch disconnecter panels

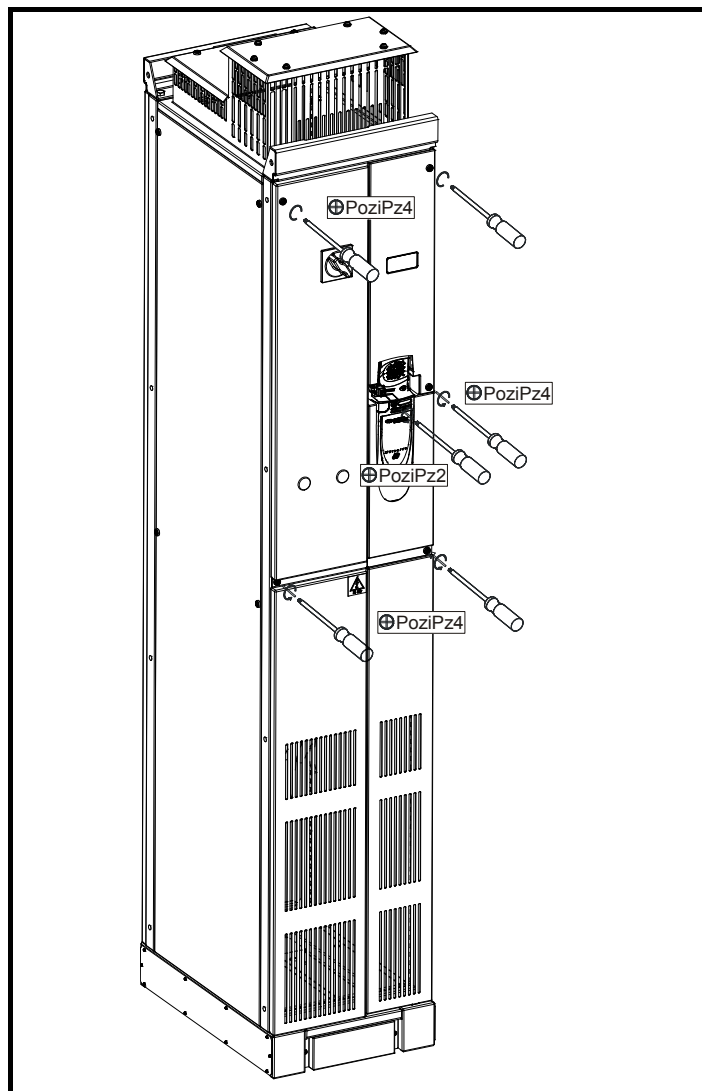


Figure 1-3 Features of the Unidrive SP size 6 and 7 Free Standing drive with switch disconnecter

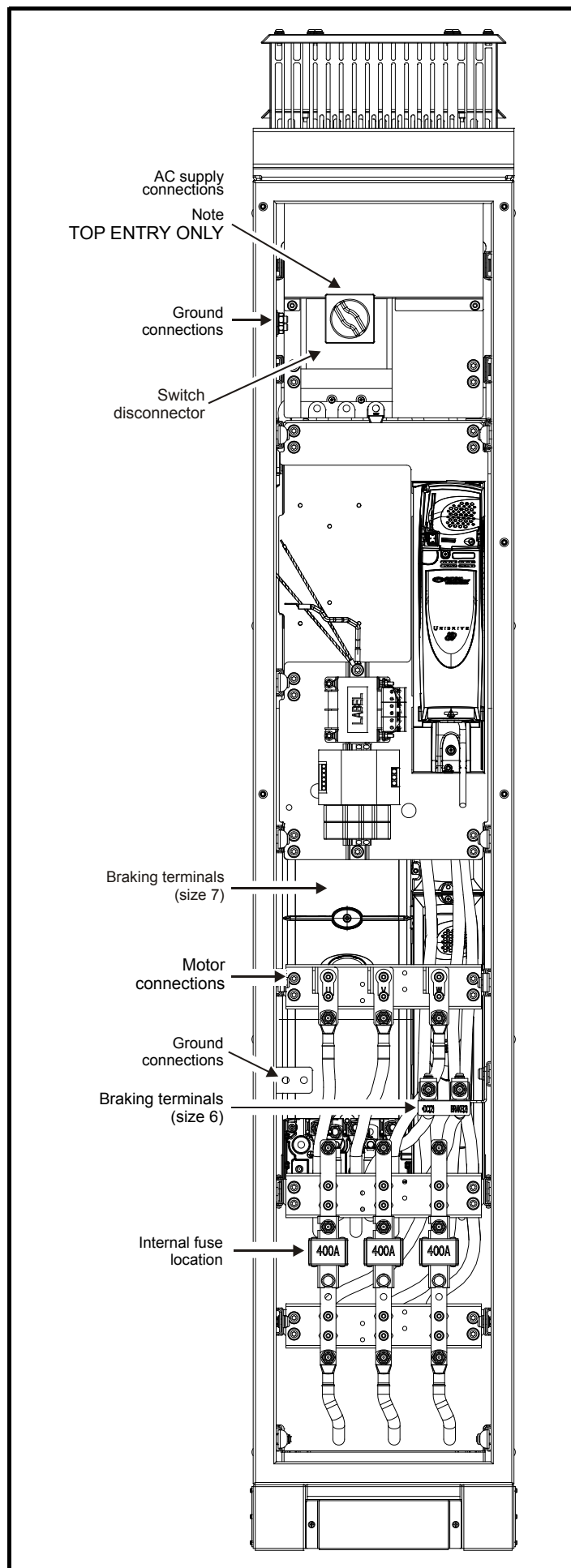
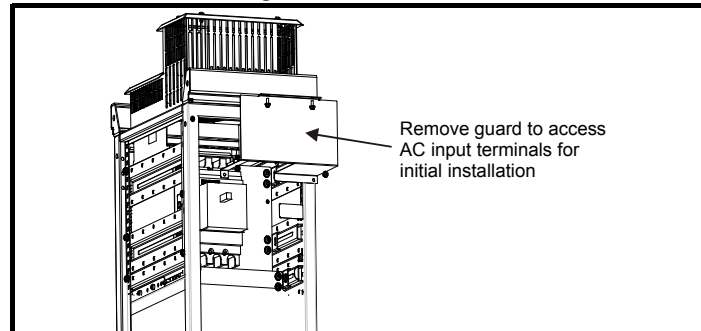


Figure 1-4 Removal of switch disconnecter guard on size 6 and 7 Free Standing drive with switch disconnecter



Cables behind this panel will be permanently live. This panel must not be removed without isolating from the power source

NOTE

Unidrive SP size 6 and 7 only support top entry for AC power supply cables. The guard must be replaced once the supply cables have been installed.

Figure 1-5 Top down view of Unidrive SP size 6 and 7 Free Standing drive with switch disconnecter

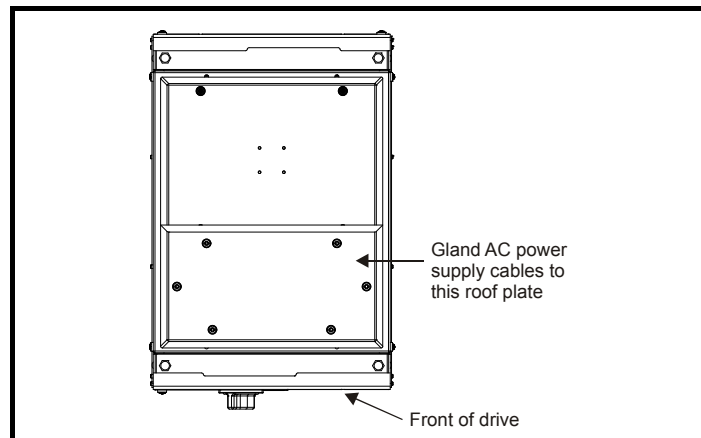
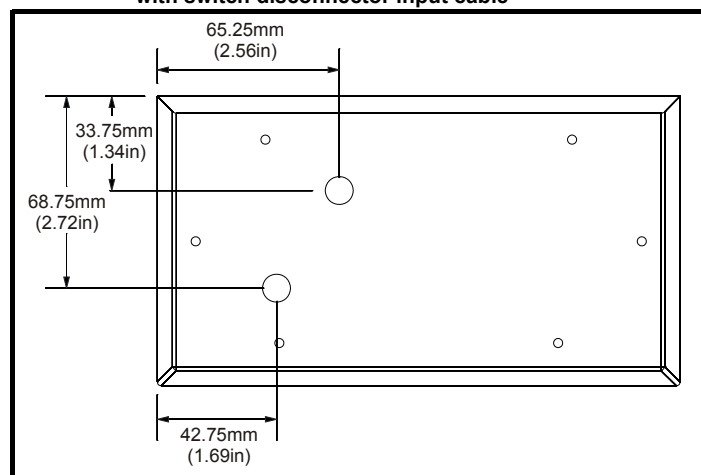


Figure 1-6 Recommended position of roof gland plate through holes for Unidrive SP size 6 and 7 Free Standing drive with switch disconnecter input cable



All wiring and glanding to be constructed to wiring regulations in the intended country of use.



For all 690V Free Standing drives supplied with a switch disconnector, the fitting of an insulation kit is a mandatory safety requirement to prevent flash over.

Insulation kits are supplied with the following Free Standing drives. For fitting refer to the installation sheet supplied with the insulation kit.

Table 1-1 Insulation kit

Insulation kit	Model
9500 - 0097	SP66X1
	SP66X2
	SP76X1
	SP76X2

Figure 1-7 Unidrive SP size 6 Free Standing drive with switch disconnector power connections

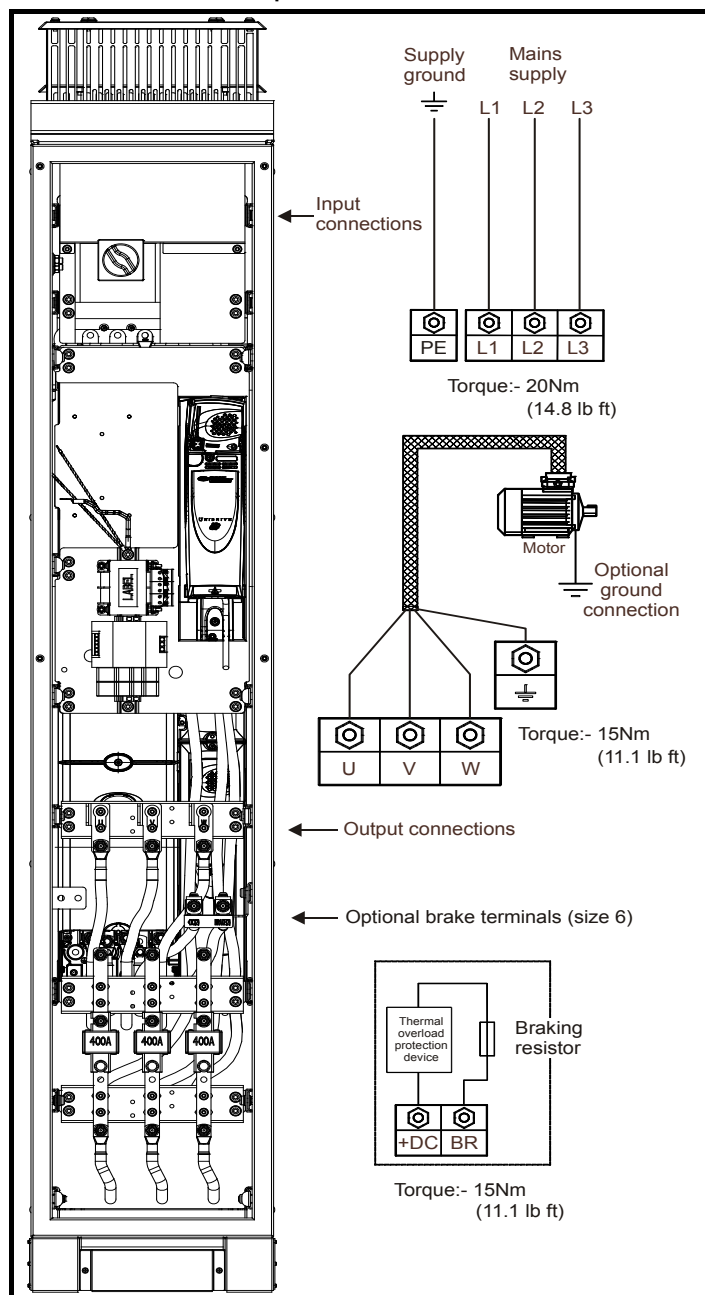


Figure 1-8 Unidrive SP size 7 Free Standing drive with switch disconnector power connections

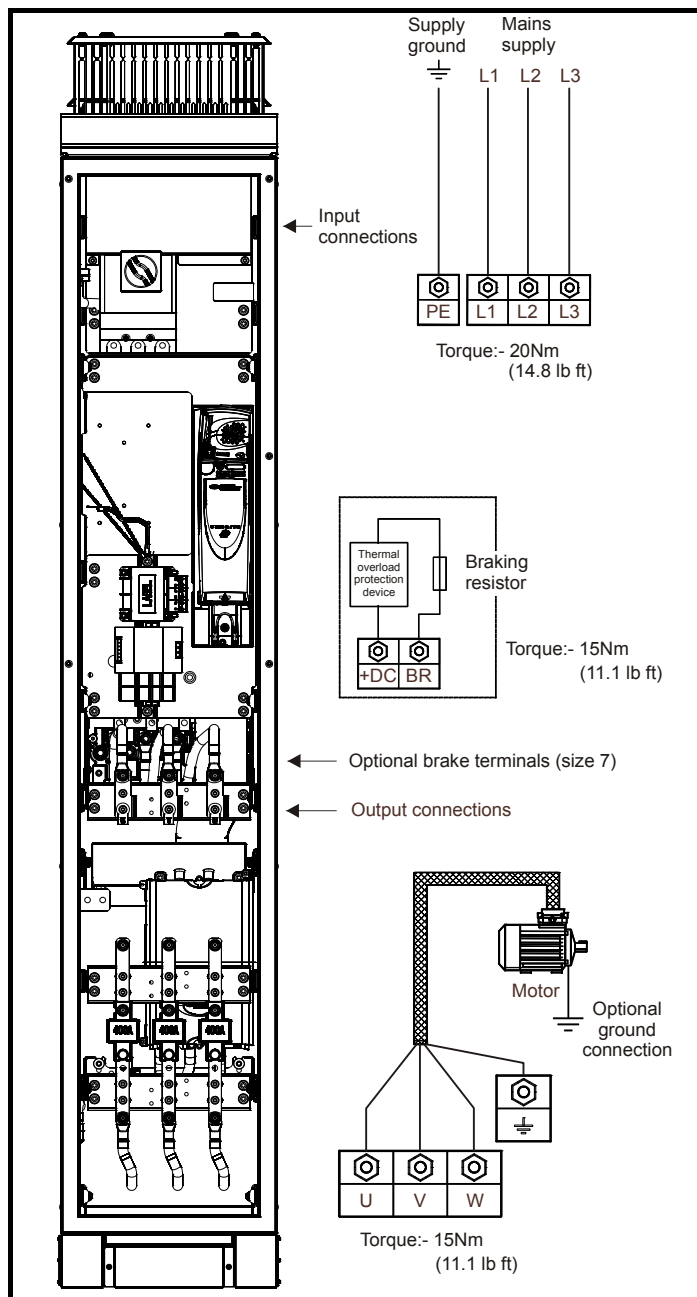


Table 1-2 Unidrive SP size 6 and 7 Free Standing drive with switch disconnector input current and cable size ratings

Model	European input and output cables				USA input & output cables
	Largest IEC		Smallest IEC		
	Cable gauge (mm ²)	Installation category*	Cable gauge (mm ²)	Installation category*	USA wire gauge (Kcmil/AWG)
64X1	1 X 120	C	1 X 70	G	1 x 300 kcmil
64X2	1 X 150	C	1 X 95	G	1 x 350 kcmil
74X1	1 X 185	C	1 X 120	G	1 x 500 kcmil
74X2	1 X 240	C	1 X 150	G	2 x 4/0 AWG
66X1	1 X 50	C	1 X 35	G	1 x 2/0 AWG
66X2	1 X 70	C	1 X 50	G	1 x 3/0 AWG
76X1	1 X 95	C	1 X 50	G	1 x 4/0 AWG
76X2	1 X 95	C	1 X 70	G	1 x 250 kcmil

* Installation method ref: IEC60364-5-52:2001

Table 1-3 Unidrive SP size 6 and 7 Free Standing drive with switch disconnector mains and control fuse rating

Model	Mains fuse rating					Control fuse rating		
	Fuse IEC aR	Ferraz		Bussmann		Bussmann		
		CT Part No.	Manufacturer Part No.	CT Part No.	Manufacturer Part No.	Fuse rating	CT Part No.	Manufacturer Part No.
64X1	400A	4300-0400	6,6 URD32D08A0400	3533-4069	170M3019	2 x 1A	3533-1169	C14M1
64X2								
74X1								
74X2								
66X1								
66X2								
76X1								
76X2								

Key to cable installation method

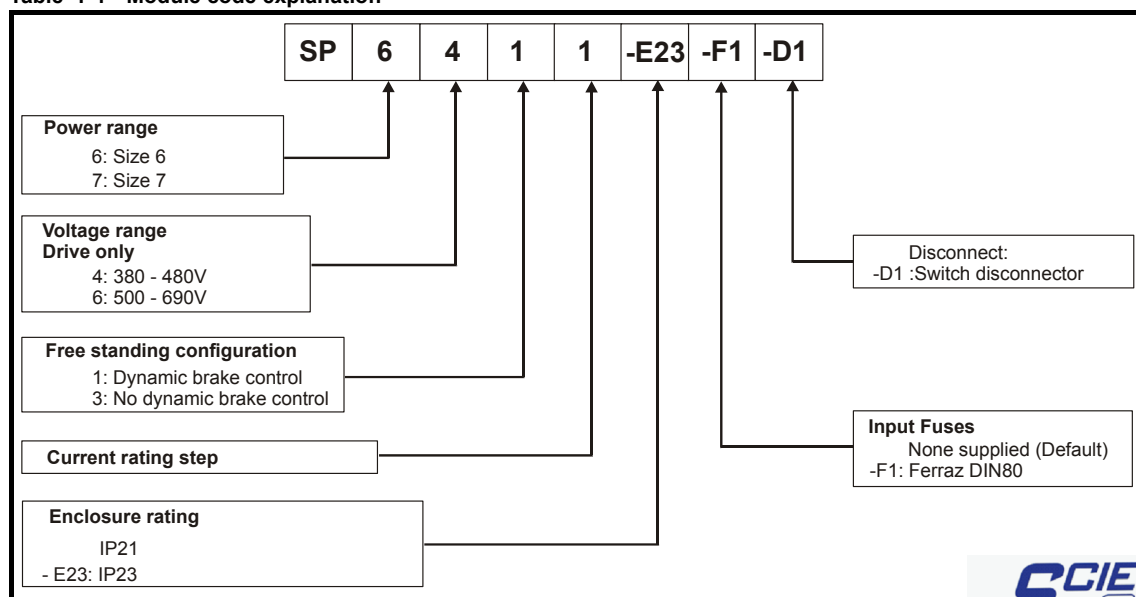
C	Multicore cable in free air
F	Separate cables bunched in groups of three in free air
G	Individual cables separated vertically in free air

AC supply specification

The Unidrive SP size 6 and 7 Free Standing Drive with integral incomer line side options must not be used in a circuit capable of delivering more than 30kA

WARNING

Table 1-4 Module code explanation



SCIGATE AUTOMATION (S) PTE LTD

No.1 Bukit Batok Street 22 #01-01 Singapore 659592

Tel: (65) 6561 0488 Fax: (65) 6562 0588

Email: sales@scigate.com.sg Web: www.scigate.com.sg

Business Hours: Monday - Friday 8.30am - 6.15pm